

Model AC & CAC

Recirculatory Air Door

- *Single Nozzle And Intake*
- *Proprietary Nozzle Design*
- *Greatly Diminishes Air and Moisture Infiltration*
- *Horizontal, Curvilinear, Recirculatory Air Flow*
- *Powder Coated Steel*
- *Metal Clad Insulation When Required*



COOLER OR AMBIENT DOOR SPECIFICATIONS:

Supply where indicated on plans HCR Model AC Air Door for doorways with low temperature differential and or for temperatures above freezing.

Air Door to be powder coated cold-rolled steel. Powder coating meets 500 hour salt spray test.

NEMA 1 Power/control panel complete. Model AC equipment cabinet houses the centrifugal fan and prewired electrical components. Service door(s) are provided,

if required, to allow access to all internal components. Motor is controlled by VFD (Variable Frequency Drive). Single point electrical connection.

Air Door to have two side plenums: one with discharge nozzle, the other with an intake. Discharge nozzle is easily adjustable to maximize air block. Air volume adjustment mechanisms are easily accessible without removing any covers or secondary openings.

Unit can be mounted on either side of wall. Depending on temperature differential, insulation cladding may be required.

Air Door assembly is structurally self-supporting. All hardware has protective coating against corrosion.

Air Door power to be 208, 240, or 480 volt AC, 60 Hertz, 3 phase. Visible signal light to show when motor is not running. Complete door assembly to be ready for connection to power. (Architect to designate responsibility for field wiring.)

FREEZER DOOR SPECIFICATIONS:

Freezer Air Door specifications to be same as cooler or ambient Air Door except for these substitutions and additions: Supply where indicated on plans HCR Model CAC

for freezers doorways with temperature differentials below 30 degrees Fahrenheit. Provide insulation cladding as required for application.

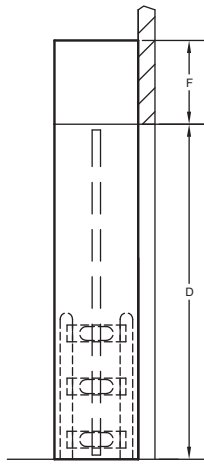
Cabinet can be mounted either warm side or cold side of wall.

Electric resistive heat or waste heat reclaim as required.

OPTIONS: (SPECIFY which options are desired)

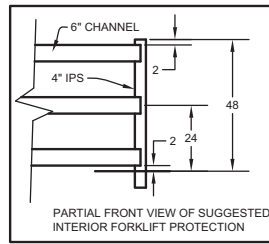
1. Metal cladding can be stainless steel or cold-rolled steel powder coated to custom color.
2. "Clean outs" can be added where needed.
3. Complete NEMA 3, 4, 4x, 4x stainless, or 12 requirements.
4. Hot Gas Coil instead of resistive heat.
5. Custom standoff panels with trim to interconnect to night doors or existing doors.
6. HCR Air Door to be used in conjunction with existing or new door to form a Hybrid

solution. These doors can include all types of insulated roll up doors, double curtain roll up doors, hard insulated automatic doors that slide either horizontally or vertically, or insulated sliding mattress doors. If a non-insulated door is used verify condensation or frosting can occur.



SIDE VIEW

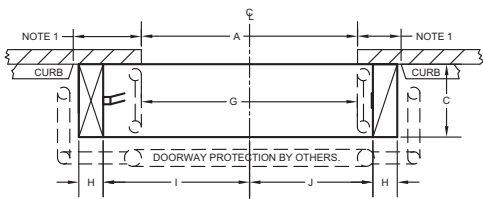
- NOTES:**
1. 30" MINIMUM CURB TO DOORWAY CLEARANCE REQUIRED.
 2. DISCONNECT SWITCH NOT PROVIDED.



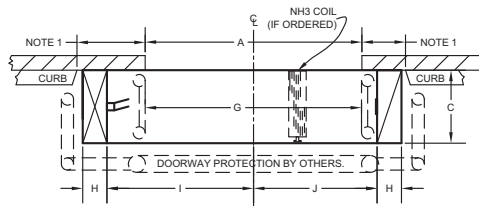
**BOLLARD SECTION
(SUGGESTED)**

Warranty:

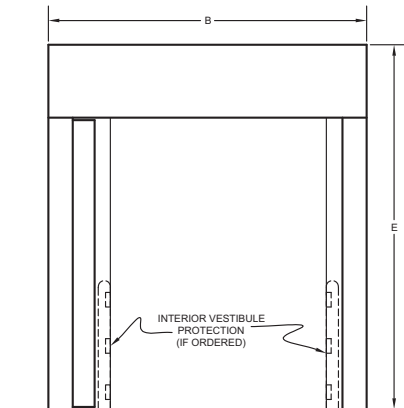
Provide warranty for a minimum period of one (1) year from the date of equipment start up by contractor or sub-contractor, according to the manufacturers' standard terms and conditions.



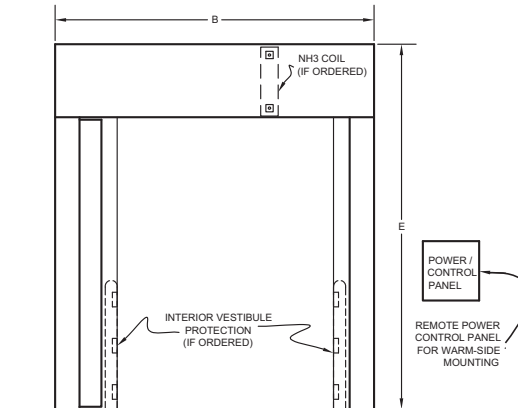
PLAN VIEW



PLAN VIEW



**AC
ELEVATION**



**CAC
ELEVATION**

INSTALLATION POINTS:

1. Install air curtains, hardware, and electrical components in strict accordance with Architect's drawings and specifications and the door manufacturer's written instructions.
2. Complete installation, operating, and maintenance instructions shall be supplied for each door by manufacturer.
3. Manufacturer shall furnish all hardware necessary to install Air Doors, to wood or steel bucks, including trim, anchor bolts and floor clips.
4. Install plenums plumb and square, in correct locations indicated on drawings and with a maximum diagonal distortion of 1/4" over height of doorway. Ensure top equipment cabinet is securely and rigidly anchored to adjacent construction.



Jamison Door Company • P.O. Box 70 • Hagerstown, MD 21741-0070
 Call Toll Free • 1-800-532-3667 or 301-733-3100
 FAX: 240-329-5155
 INTERNET: <http://www.jamisondoor.com>
 E-MAIL: contact@jamisondoor.com