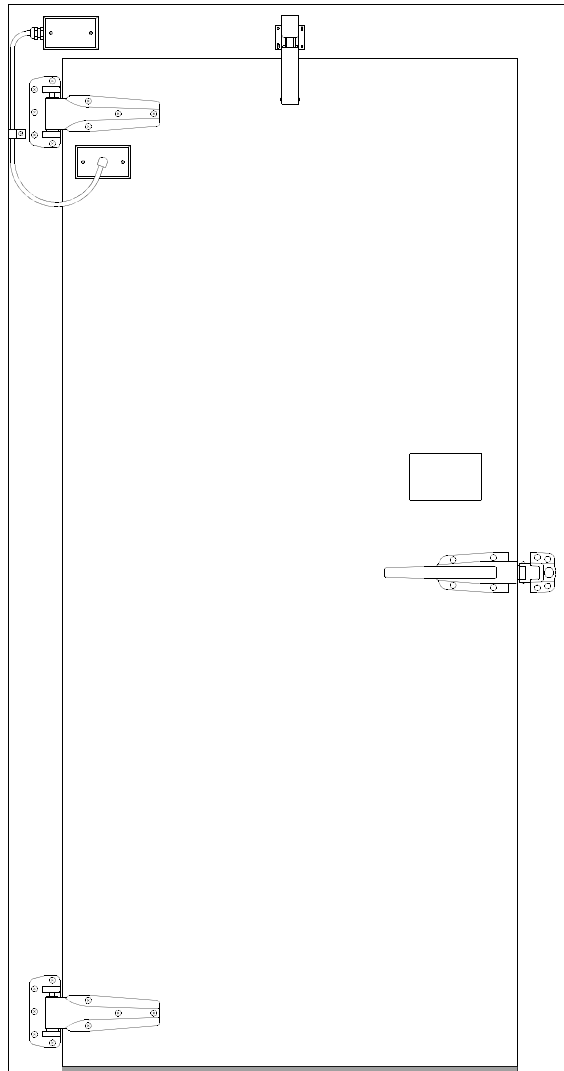




INSTALLATION INSTRUCTIONS INFITTING AND OVERLAP DOORS



JAMISON DOOR COMPANY

55 J.V. Jamison Drive
Hagerstown, MD 21740-3916 U.S.A.
Phone: 1-800-532-3667 or 301-733-3100
Fax: 301-791-7339

CONTENTS

SECTION	TITLE	PAGE
INSTALLATION INSTRUCTIONS		3
1.	Installation Overview	3
2.	General Information	4
3.	Door Installation	5
4.	Installation of Optional Thermostat	8
5.	Door Adjustments.....	9
6.	Junction Box Connections	11
7.	Test Door Operation.....	14
8.	Trouble Shooting Guide	15
LUBRICATION CHART		16
REFERENCE DRAWINGS		17

INSTALLATION INSTRUCTIONS

1. INSTALLATION OVERVIEW

NOTES:

1. Please use this booklet as a step by step installation guide.
2. This book contains instructions for many different door configurations, some sections may not be needed.

A. CONTENTS OF CRATES AND CARTONS

1. Frame components, door
2. One carton contains:
 - a. Packing list
 - b. Installation and operating instructions
 - c. Miscellaneous parts labeled for identification

B. INSPECT FOR DAMAGES AND/OR SHORTAGES IMMEDIATELY

1. Open all shipping containers and inspect for concealed damage and/or shortages. Carefully repack to prevent further damage and pilferage.
2. Note on all copies of the delivery receipt any damages and/or shortages.
3. If shipping damage occurred, report it in writing to the transportation company. Refer to Jamison's Terms & Conditions Form 166.

C. HANDLE ALL PARTS CAREFULLY

1. Certain parts such as gaskets, wiring, etc. are vulnerable to damage.

D. READ ALL INSTRUCTIONS BEFORE PROCEEDING WITH THE INSTALLATION

1. Instructions include basic drawings and schematics. These instructions and any other documents are included with this shipment.
2. Refer to job drawings for special features.

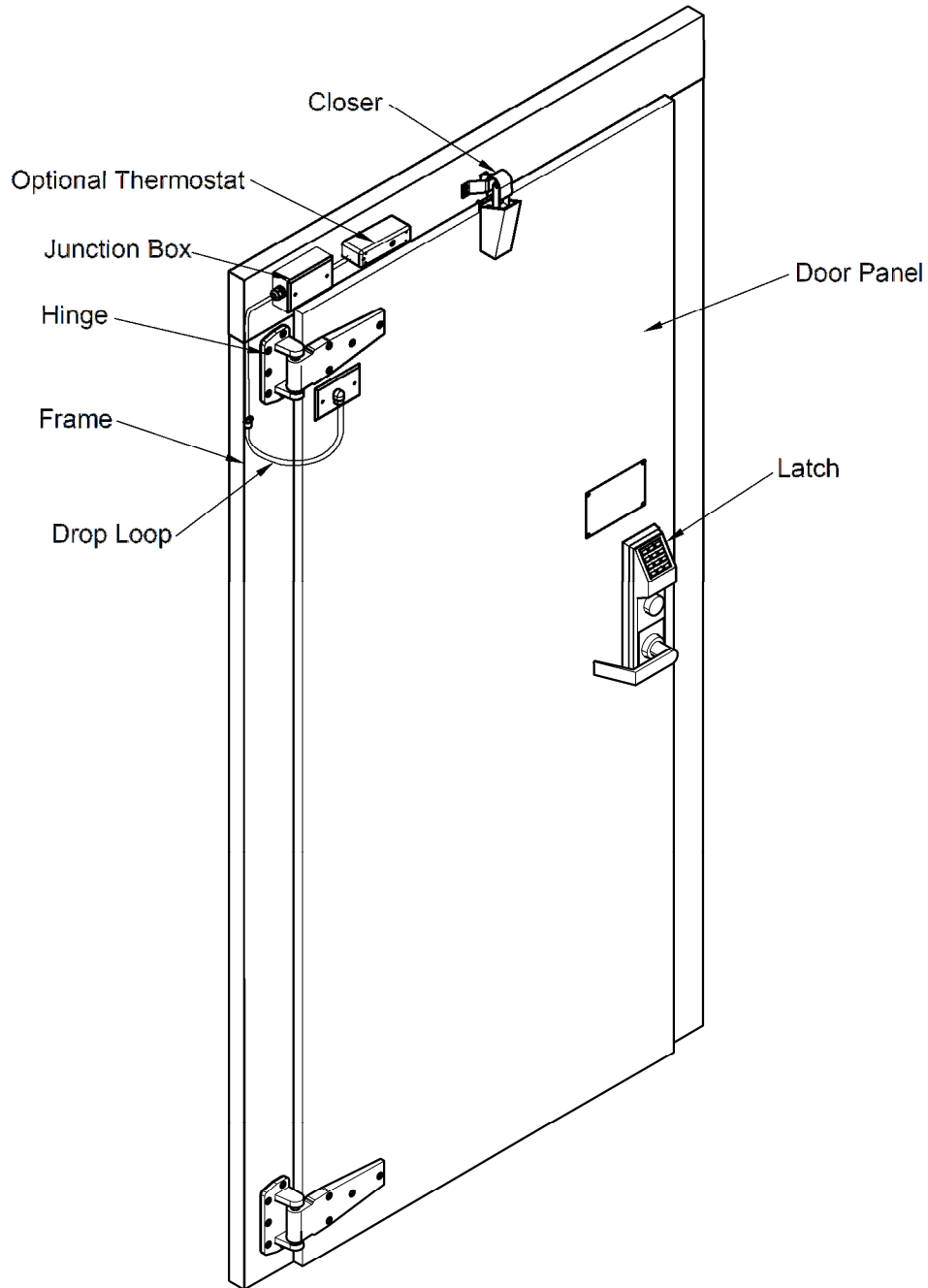
E. PLAN AHEAD

1. Have all tools and materials necessary for installation readily available.

F. INSTALLATION OVERVIEW

1. Prep the door opening.
2. Install the door frame.
3. Make electrical connections.
4. Make adjustments to the door.

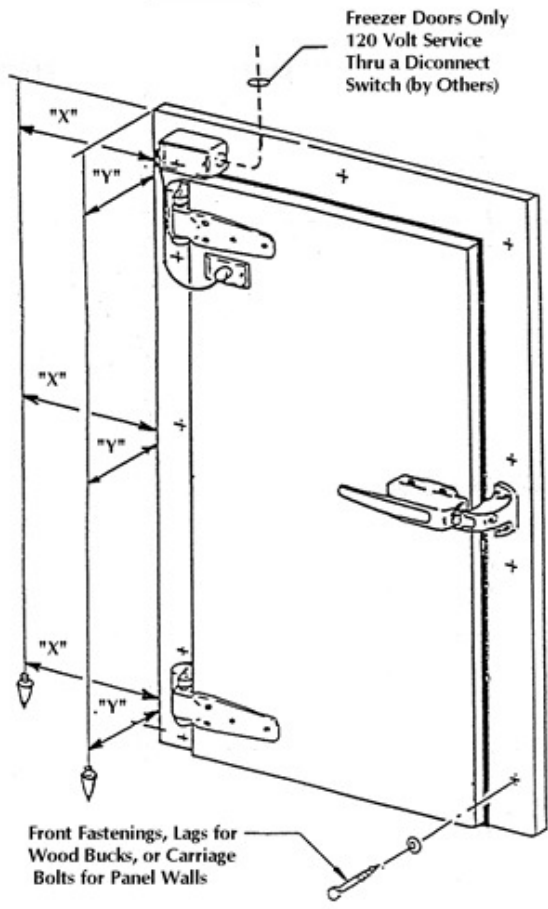
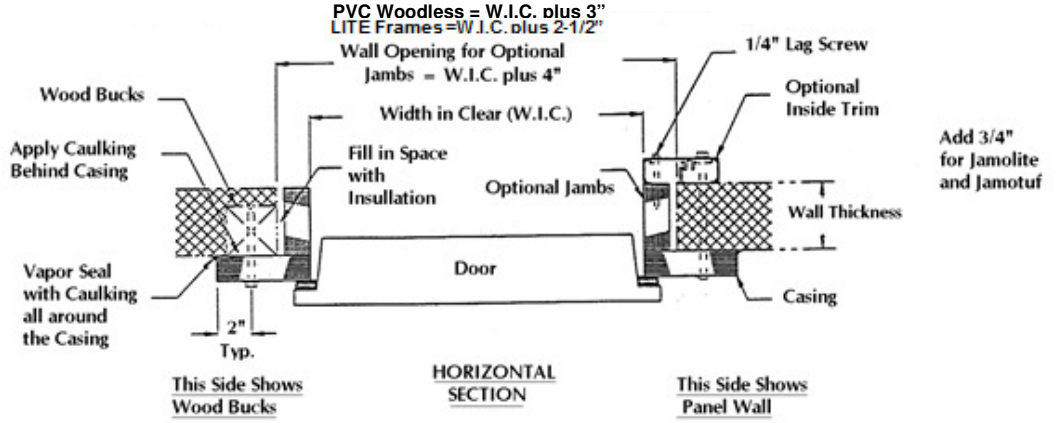
2. GENERAL INFORMATION



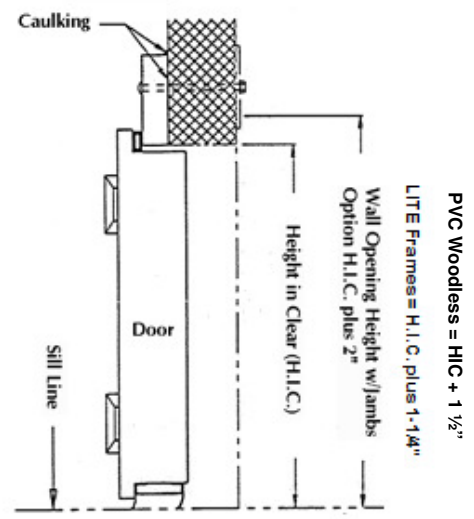
NOTES:

1. Left hand swinging door shown, right hand opposite.
2. Door hardware may be different from what is shown.

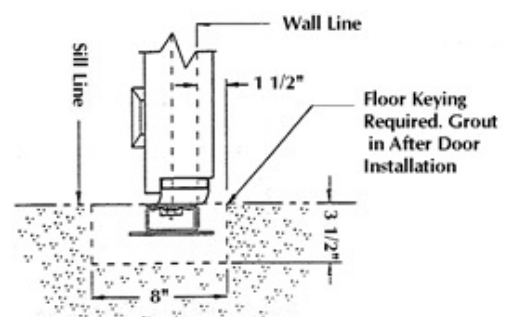
3. DOOR INSTALLATION



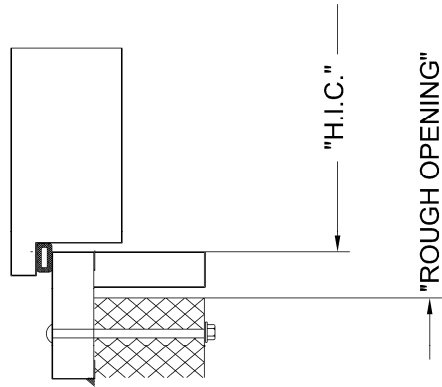
FRONT ELEVATION
 L.H. SWING SHOWN, R.H. OPPOSITE



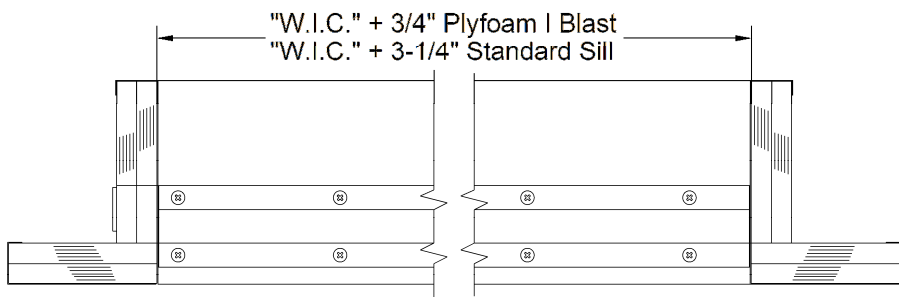
TYPICAL VERTICAL SECTION



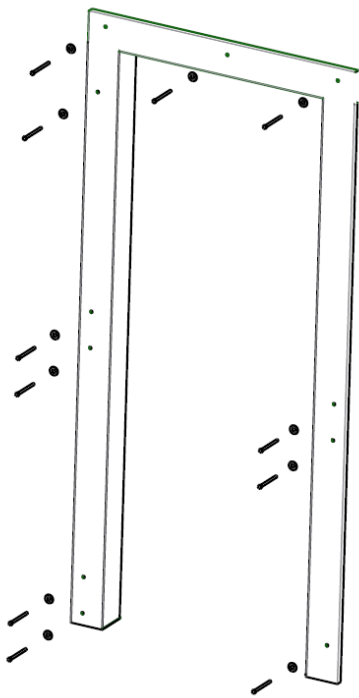
VERTICAL SECTION
 SHOWING OPTIONAL HEAT IN FLOOR



HIGH SILL DETAIL



HEAT IN FLOOR



WOODLESS BOLT LOCATION

- LAGS OR THROUGH BOLTS ON EACH SIDE OF LATCHES AND HINGES
- 3 HINGES ARE REQUIRED
- OVERSIZED WASHERS ARE REQUIRED
- LATCH SIDE BOTTOM BOLT / LAG SHALL BE APPROXIMATELY 6" FROM FLOOR
- LATCH SIDE TOP BOLT / LAG SHALL BE APPROXIMATELY 2" FROM THE TOP OF CASING MATERIAL

NOTES:

1. See the reference drawings in the back of the booklet for further information.

A. PREPARE THE DOOR OPENING**STEPS:**

1. Cut the opening in the wall to suit the door size and frame options.
2. Verify that the wall around the door opening is smooth and in a true plane. Also, verify that the floor where the door will be swinging is smooth and level. Doors that are equipped with a channel iron sill must have floor keying for the sill unit.

B. DOOR REMOVAL**NOTES:**

1. This step is optional and recommended for larger/heavier doors
2. Doors using PVC woodless trim must wedge/shim door so that the weight is off the hinges while aligning and bolting frame.

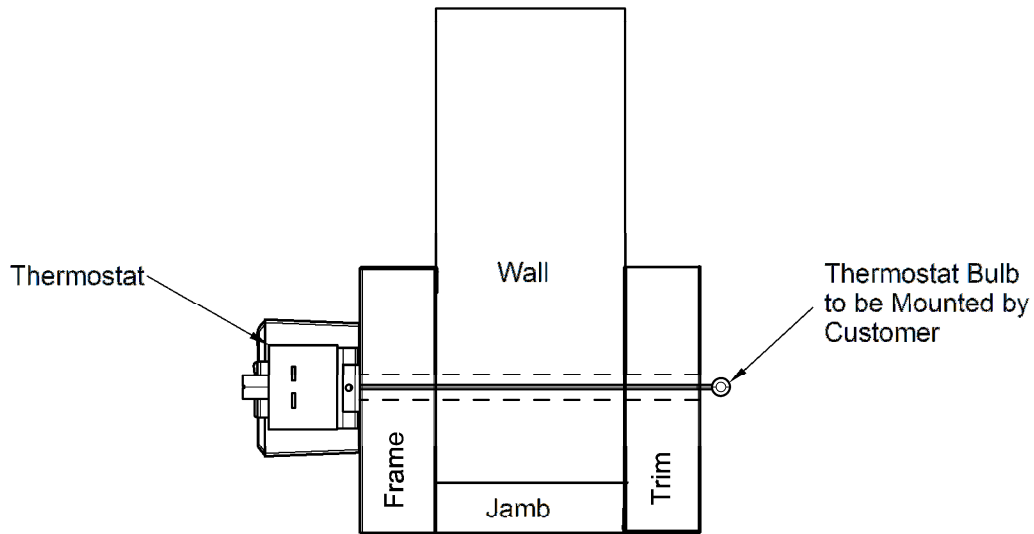
STEPS:

1. Wedge/shim the door so that the weight is off of the hinges.
2. Method 1: Drive out the hinge pins.
Method 2: Unscrew the hinge blades from the door.
3. Remove the door from the frame and store it safely.

C. INSTALLATION**STEPS:**

1. Remove the thermostat from the top of the frame.
2. If the door is a track door remove the track gasket.
3. Caulk the back of the frame with a continuous heavy (1/2") bead of non-hardening caulk (e.g. silicone or butyl).
4. Place frame in the opening and center. If the door is a track door also center the track port to the rail.
5. Plumb the frame using a plumb bob as shown. Shim behind the frame as needed. If the door frame is not plumbed properly the door may not swing correctly.
6. Install the frame fastenings as shown. It is important to locate the fasteners over and under each of the hinges and the keeper.
 - a. For PVC woodless it is required to locate a fastener approximately 2" above and below each hinge and latch.
7. If trim is to be installed, flush it to the edge of the jamb and fasten it with screws.
8. Vapor seal around all edges of the frame, trim, and jambs with a bead of non-hardening caulking.
9. If the door is a track door cut the gasket to fit the rail and reinstall the gasket.
10. Reinstall the door if removed.

4. INSTALLATION OF OPTIONAL THERMOSTAT



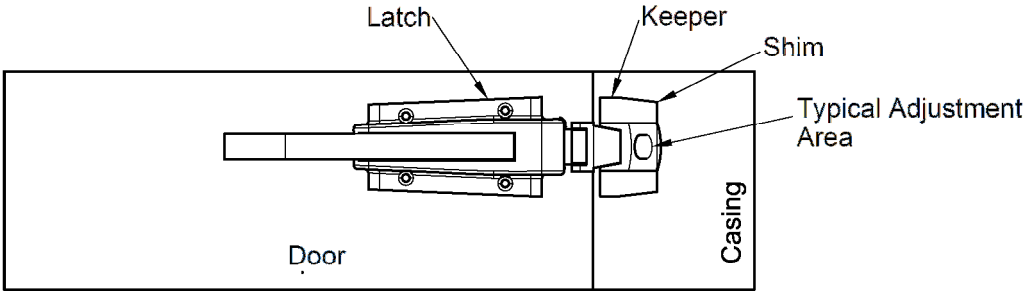
NOTES:

1. If the door did not come with a thermostat or the door is a Plyfoam I blast freezer proceed to the next page.
2. Do not bend the thermostat capillary tube less than 3/8" radius as a pinched tube will cause the thermostat not to function.
3. Do not tape capillary tube in place, as, this may cause inaccuracies.
4. Jamb and trim are optional components.

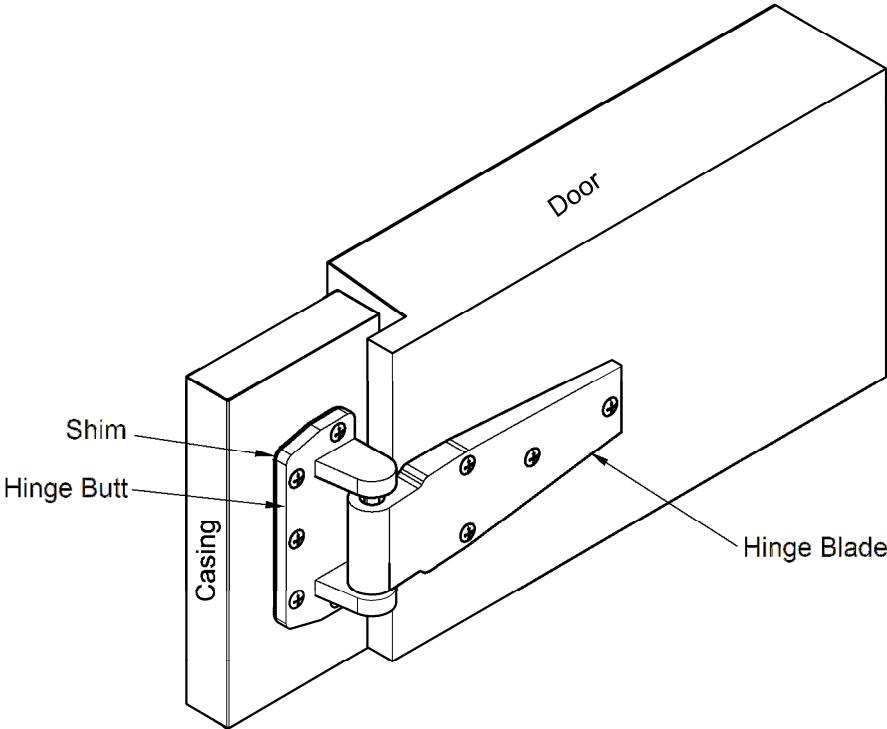
STEPS:

1. Remove the thermostat from the frame.
2. Using the hole in the header as a guide drill a 7/16" hole through the wall and trim.
3. Route the thermostat bulb through the wall and securely attach it.
4. Reattach the thermostat to the frame.
5. Caulk and seal the hole that was drilled for the thermostat bulb.

5. DOOR ADJUSTMENTS



LATCH ADJUSTMENT



HINGE ADJUSTMENT

A. HINGE ADJUSTMENT

NOTES:

1. This procedure should be performed if the door is too hard to shut or the back gasket does hinge edge gasket does not seal.
2. If the gaskets are heavily worn they may need to be replaced.
3. Always shim all of the hinges equally.
4. If the door does not close properly add a shim to each hinge.
5. If the door does not seal properly remove a shim from each hinge. To test for a proper seal take a piece of paper and place it between the door and the gasket in several places. If the paper can be removed with only a slight drag then the gaskets are adjusted properly.
6. Hinges may be different from what is shown.

STEPS:

1. Wedge/shim the door so that the weight is off of the hinges.
2. Unscrew one of the hinge butts from the door.
3. Add a shim or remove a shim depending on how the door needs to be adjusted.
4. Reattach the hinge butt and repeat this procedure for the rest of the hinges.
5. Remove the wedge/shim and retry the door. If the door needs more or less shimming repeat this process until the door functions correctly.

B. LATCH ADJUSTMENT

NOTES:

1. This procedure should be performed if the front side gasket does not seal properly or the door is hard to latch.
2. Latches and keepers may be different from what is shown.

STEPS:

1. Adjust the latch and keeper and check for proper closing.
2. If further adjustment is needed add or remove a shim from under the keeper.
3. Repeat the process as necessary until the door closes properly.

C. GASKET ADJUSTMENT

NOTES:

1. The bottom gasket is cut long from the factory to accommodate variances in the floor.

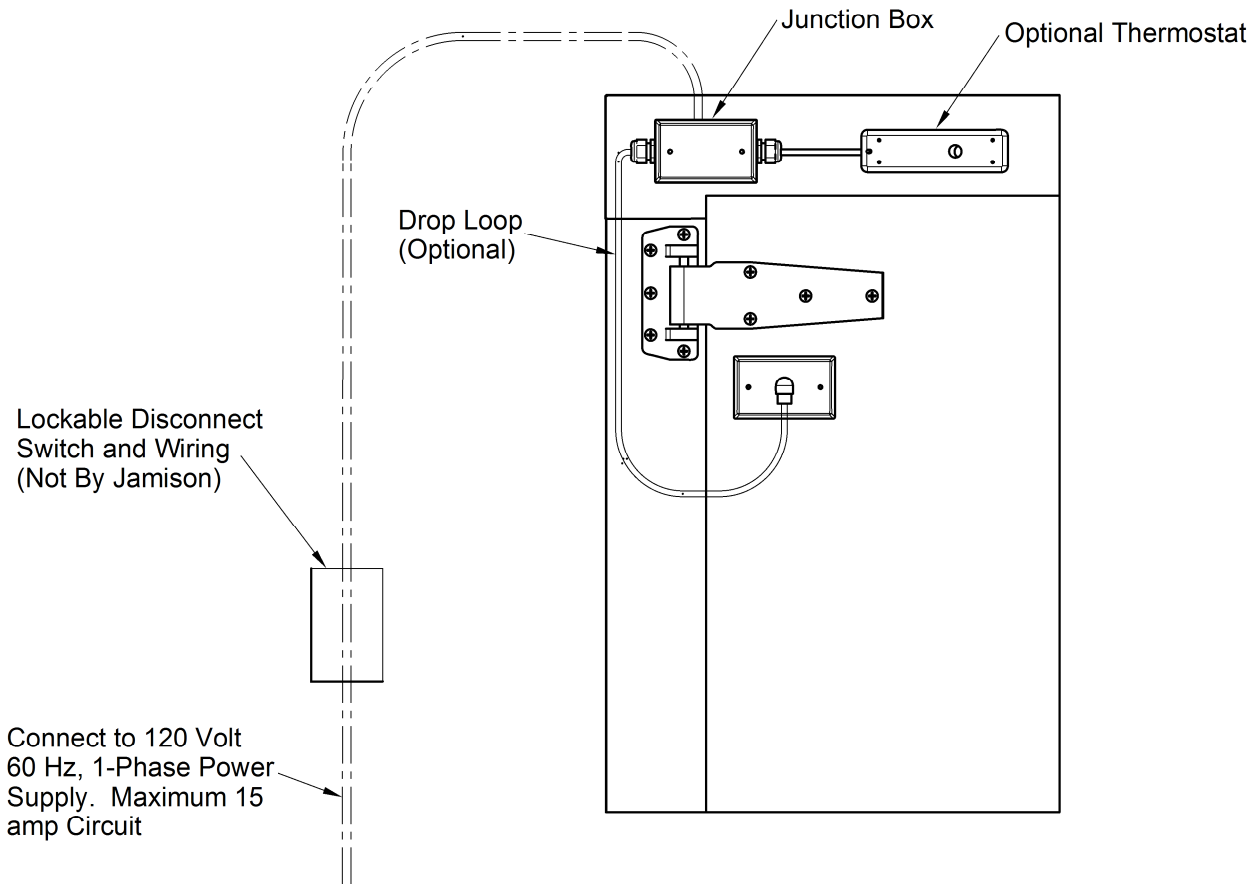
STEPS:

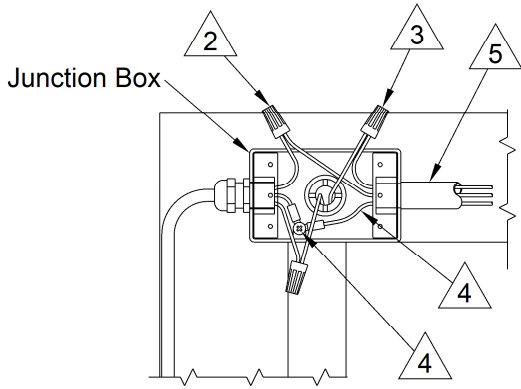
1. Cut the bottom gasket to length. When cut correctly the gasket should lightly skim the floor.

6. JUNCTION BOX CONNECTIONS

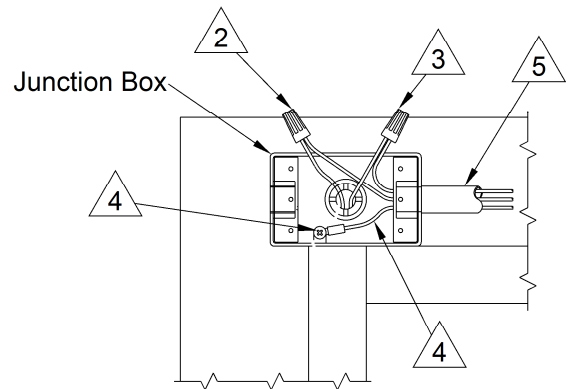


WARNING: PRIOR TO ANY ELECTRICAL HOOK-UP, ALL POWER SUPPLIES MUST BE TURNED OFF, LOCKED OUT, AND TAGGED. SERIOUS INJURY OR DEATH CAN OCCUR FROM CONTACT WITH POWER SUPPLIED TO THE DOOR.

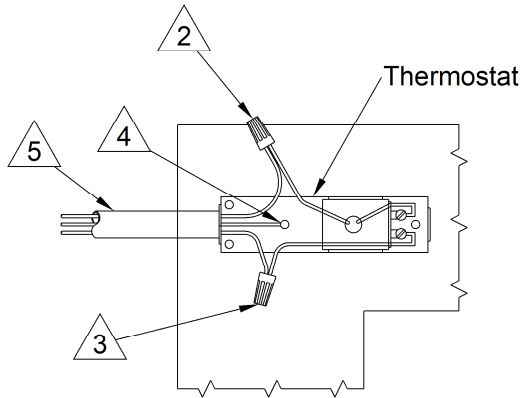




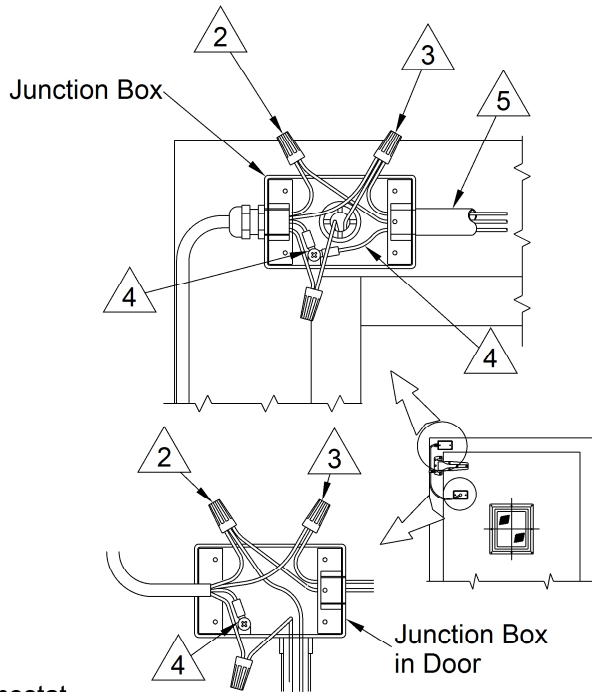
**PLYFOAM II, JAMOLITE, & JAMOTUFF
HEAT 3 SIDES OF FRAME AND BOTTOM
OF DOOR**



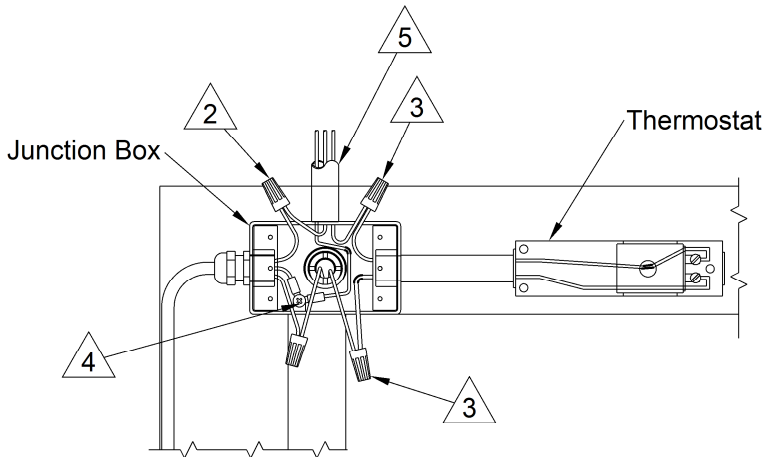
**PLYFOAM II, JAMOLITE, JAMOTUFF,
& OVERLAP II HEAT 4 SIDES OF FRAME**



**PLYFOAM I BLAST FREEZER W/
THERMOSTAT HEAT 4 SIDES OF FRAME**

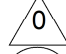
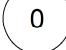


**FREEZER DOOR WITH HEATED VIEW
WINDOW HEAT 3 SIDES FRAME & BOTTOM
OF DOOR**



**PLYFOAM I, PLYFOAM II, OVERLAP II
FREEZER W/ THERMOSTAT HEAT 3 SIDES
OF FRAME AND BOTTOM OF DOOR**

KEY

-  References a Step
-  References a Part

notes:

1. Left hand swing shown, right hand opposite.
2. All wiring must be in accordance with the N.E.C. and local codes.

STEPS:

1. Disconnect all power.
2. Connect the neutral (white) lead(s) to #2 white wire(s).
3. Connect the hot (black) lead(s) to #1 black wire(s).
4. Connect the ground lead(s) (green) to the ground wire terminal.
5. Connect a 120 volt electrical service to the connection box through a lockable disconnect switch (not by Jamison).

7. TEST DOOR OPERATION

STEPS:

1. Thoroughly test the door(s).
2. If the door(s) do not function properly, carefully recheck the installation procedures.
3. If you cannot resolve the issue, call Jamison Technical Service, at 1-800-532-3667 or in MD (301) 733-3100. PLEASE BE SURE TO HAVE IN FRONT OF YOU THE MODEL NUMBER, SERIAL NUMBER, AND ALL INSTRUCTIONS. The model number and serial number can be found on the label plate(s) on the hinge edge of the door.

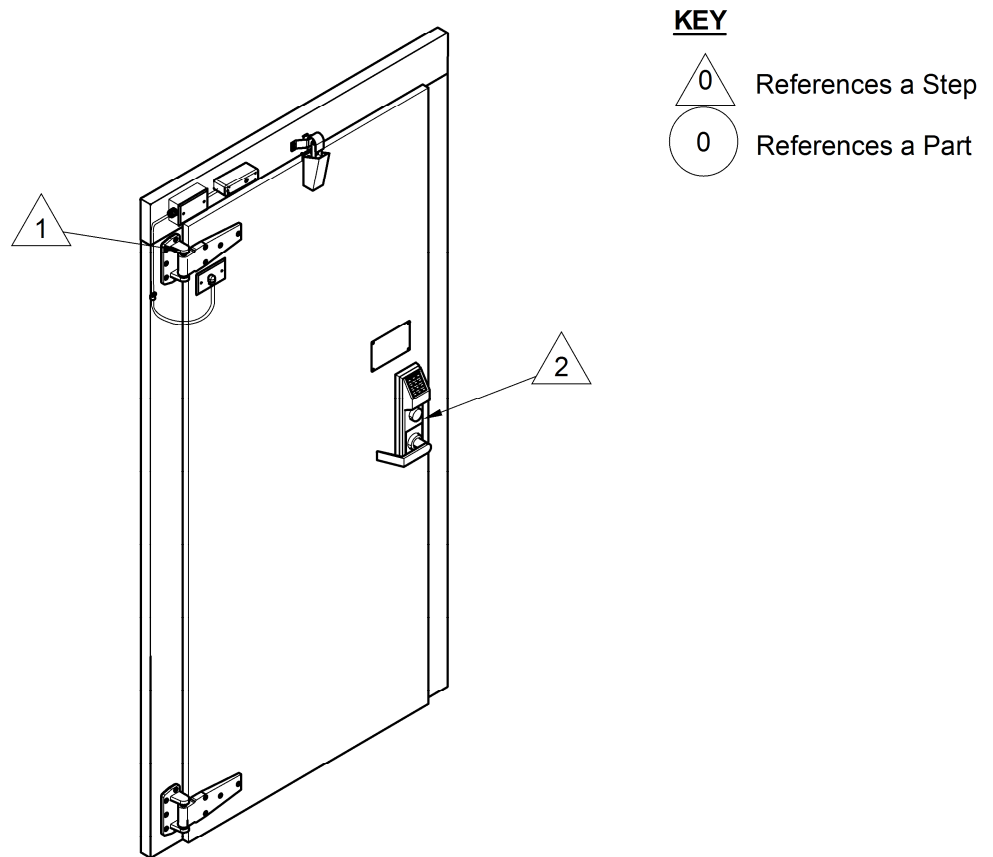
8. TROUBLE SHOOTING GUIDE

NOTES:

1. The door must swing freely without any dragging or binding during operation.

PROBLEM	PROBABLE CAUSE	REMEDY OR CHECK
A. Door freezing shut	<ol style="list-style-type: none"> 1. Frostop inoperative 2. The door is leaking 	<ol style="list-style-type: none"> 1. Confirm AC power is connected to the heater wire. Verify the resistance of the heating wire is the same as the resistance listed on the Frostop plate. 2. Check that the gaskets are sealing properly
B. Door will not latch	<ol style="list-style-type: none"> 1. Frame incorrectly installed 2. Incorrect adjustment of the keeper 3. Arms limiting travel 4. Incorrect adjustment of closer 5. Excessive pressure differential between front and back of door 	<ol style="list-style-type: none"> 1. Check frame with plumb bob. 2. Adjust the latch see "Door Adjustments" 3. Check arm adjustment. and lubrication of swivel, see closer instructions for further details. 4. Adjust the closer see "Door Adjustments" 5. Check the vent ports in the wall for proper operation.
C. Door is too hard / easy to open	<ol style="list-style-type: none"> 1. Incorrect adjustment of keeper 2. Hinges need to be lubricated 3. Hinges not plumb 	<ol style="list-style-type: none"> 1. Adjust the keeper see "Door Adjustments" 2. Lubricate the hinges see the "Lubrication Chart" 3. Adjust the hinges so they are plumb
D. Door does not seal	<ol style="list-style-type: none"> 1. Frame incorrectly installed 2. Incorrect adjustment of keeper 3. Incorrect adjustment of hinge 	<ol style="list-style-type: none"> 1. Check frame with plumb bob 2. Adjust the keeper see "Door Adjustments" 3. Adjust the hinge see "Door Adjustments"
E. Through door operator frozen in place	<ol style="list-style-type: none"> 1. Ice is forming in cavity of door 	<ol style="list-style-type: none"> 1. Generously fill cavity with low temperature lubricant

LUBRICATION CHART



Acceptable Lubricants:

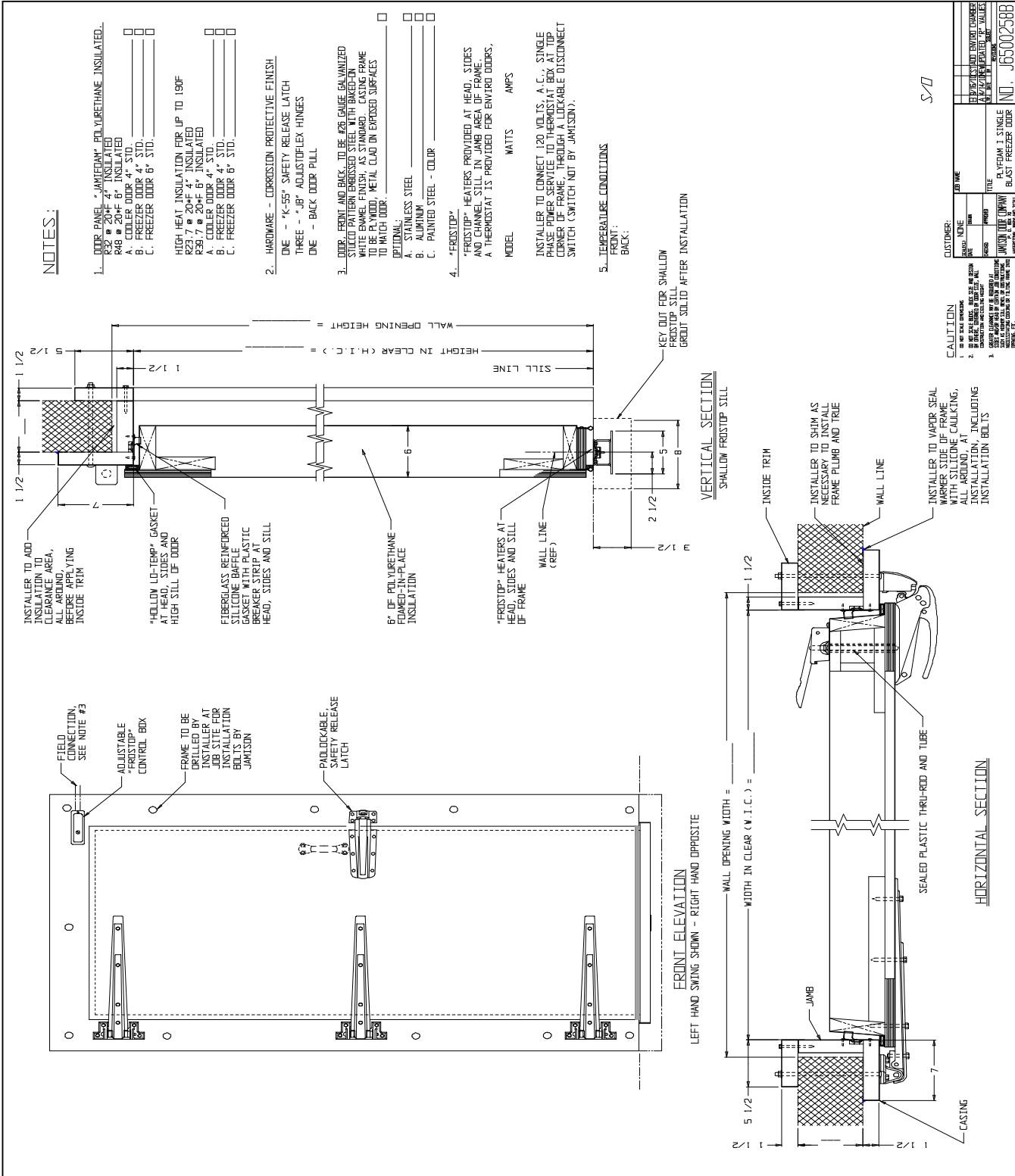
Grease: Exxon "Beacon P-290", Exxon "Beacon 325", Texaco "Low Temp EP" or Equal

NOTES:

1. Equivalent lubricants can be substituted.
2. Lubricate at 3 month intervals.
3. Hinges that are metal to metal should be greased, but, hinges that are plastic to metal should not.
4. Latches and hinges may be different from what is shown.

STEPS:

1. Grease the hinges at the pivot points.
2. Grease the latch at pivot points and tongue.



NOTES:

- DOOR PANEL "JAMIFOAM" POLYURETHANE INSULATED, R28 @ 20MF 4" INSULATED R42 @ 20MF 6" INSULATED
 - A. COOLER DOOR 4" STANDARD
 - B. FREEZER DOOR 4" STANDARD
 - C. FREEZER DOOR 6" STANDARD
- STILL TYPES:
 - A. DOUBLE TALL STILL, SPECIAL DESIGN
- FROSTOP LOCATION FOR FREEZER DOORS
 - A. 3 SIDES FRAME & BOTTOM OF DOOR
- DOOR FRONT, BACK AND EDGES TO BE #26 GA. GALVANIZED STUCCO PATTERN EMBOSSED STEEL WITH BAKED-ON WHITE ENAMEL FINISH.
 - OPTIONAL:
 - A. STAINLESS STEEL
 - B. ALUMINUM
 - C. PAINTED STEEL - COLOR _____
- CASING CONSTRUCTION (MUST MATCH JAMB CONSTRUCTION)
 - PLYWOOD METAL CLAD (1 1/2" X 5 1/2")
 - URETHANE WOODLESS (1" X 5 1/2")
 - PVC WOODLESS (1" X 5 1/2", REQUIRES JAMBS)
- DOOR HINGES (CAM-LIFT)
 - A. CORROSION PROTECTED FINISH (STANDARD)
 - B. BRIGHT ANODITE FINISH (OPTIONAL)
- DOOR LATCH
 - A. CORROSION PROTECTED FINISH (STANDARD)
 - B. CHROME PLATED FINISH (OPTIONAL)
- OPTIONS:
 - A. JAMBS, CLAD TO MATCH DOOR
 - SPECIFY WALL THICKNESS _____
 - B. INSIDE TRIM, CLAD TO MATCH DOOR
 - C. JAMB & TRIM CONSTRUCTION
 - EXTRUDED ALUMINUM (TRIM ONLY, NOT WITH PVC)
 - PLYWOOD METAL CLAD
 - URETHANE WOODLESS
 - PVC WOODLESS
 - D. DOOR SEALED TO MEET M.I.D. SPECIFICATIONS
 - E. KICKPLATE, DOOR FRONT
 - GAUGE _____ HEIGHT _____
 - F. KICKPLATE, DOOR BACK
 - GAUGE _____ HEIGHT _____
 - G. KICKPLATE, FRAME
 - GAUGE _____ HEIGHT _____
 - H. VIEW WINDOW, 12" X 14" STANDARD
 - QUANTITY OF LAYERS _____
 - J. HIGH HEAT INSULATION
 - K. OTHER _____

FRONT ELEVATION
LEFT HAND SWING SHOWN - RIGHT HAND OPPOSITE.

VERTICAL SECTION
SPECIAL HIGH STILL FRAME WITH FLUSH STILL DOOR

HORIZONTAL SECTION

DOOR NUMBER	SIZE IN CLEAR	SWING	INSULATION	TEMPERATURE CONDITIONS
	W.I.C. H.I.C. L.H. R.H.	4"	6"	FRONT BACK

CAUTION
M.I.D. OF NET GROSS DIMENSING.
DO NOT SCALE DIMS. MAKE SIZE AND DESIGN TO ORDER. ORDERING IS TOP SET. WALL THICKNESS AND INSULATION TO BE SPECIFIED.
DOOR DIMENSIONS WILL BE BASED ON THE MATERIALS LISTED AS HIGH QUALITY. BASE TO BE PROVIDED BY CUSTOMER. CONTACT YOUR SELLER FOR MORE INFORMATION ON THE CORRECTING OF TYPING ERRORS AND OMISSIONS, ETC.

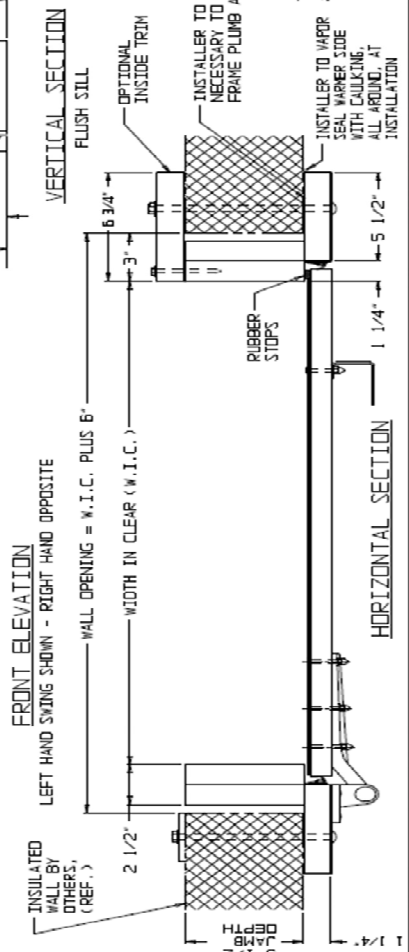
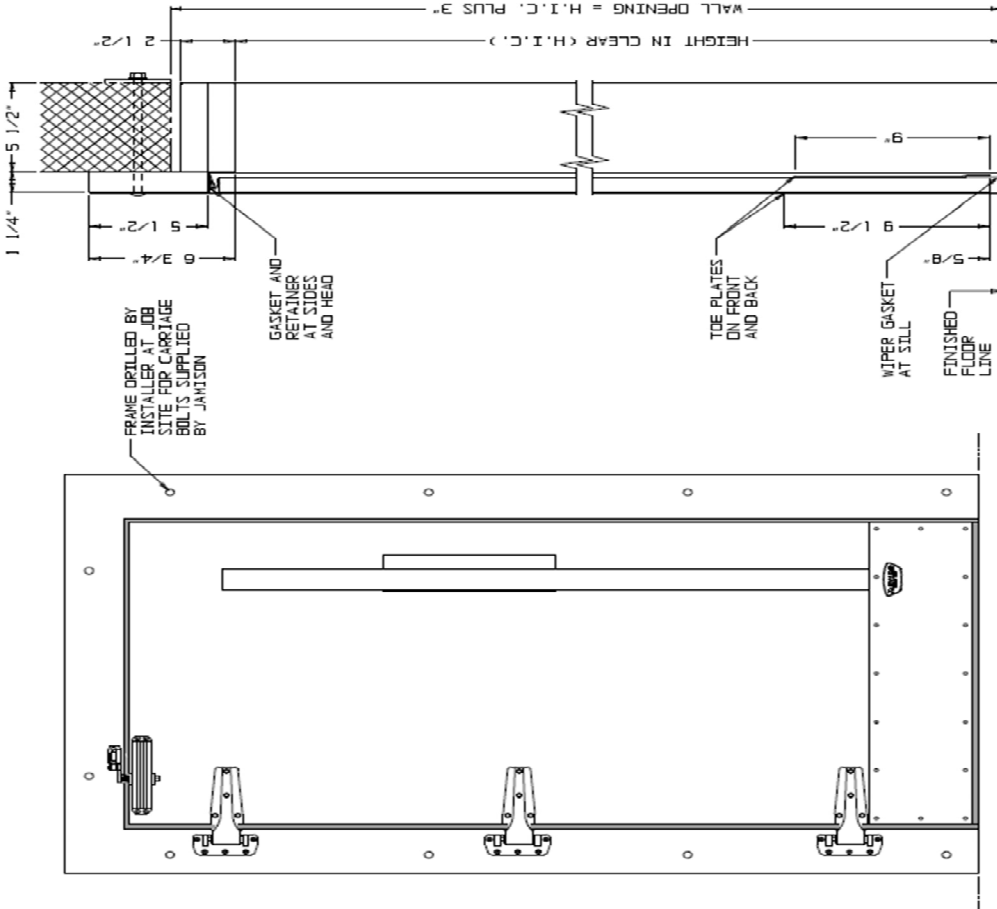
CUSTOMER: *SVD*
 JOB NAME: _____
 ORDER NO.: _____
 DATE: _____
 TITLE: PLYFORM, IT INSULATING DOOR
 JAMISON DOOR COMPANY
 1000 W. 14TH ST., SUITE 100
 WASHINGTON, IOWA 52581
 PHONE: _____
 FAX: _____
 E-MAIL: _____
 ORDER NO.: ND.H44072800

NOTES:

1. DOOR
24mm THICKNESS CLEAR TRANSPARENT ACRYLIC.
2. FRAME
CASTING AND DOUBLE JAMBS ARE FIR OR HEMLOCK LUMBER
METAL CLAD ON EXPOSED SURFACES WITH #24 GAUGE TYPE
304 STAINLESS STEEL WITH #4 POLISH.
3. CLEANING INSTRUCTIONS
DOOR MAY BE CLEANED WITH LIQUID SOAP AND WAX. AVOID
USING ANY ABRASIVE CLEANSERS OR CHEMICAL SOLVENTS.
4. FINISHABLE TOLERANCES RESERVED BY MANUFACTURER
OF PLUS 1/4" TO MINUS 0" ON OUT TO OUT OF CASTINGS,
IN WIDTH AND HEIGHT.
5. HARDWARE
THREE - CAM-LIFT REFRIGERATOR HINGES.
ONE - 60" FRONT DOOR PULL, STAINLESS STEEL.
ONE - #16 GAUGE FRONT TOE PLATE, STAINLESS STEEL.
ONE - #16 GAUGE BACK TOE PLATE, STAINLESS STEEL.
ONE - #16 GAUGE BACK PUSH PLATE, STAINLESS STEEL.
ONE - TOP MOUNTED DOOR CLOSER, HOLD-OPEN
FEATURE AND BACKCHECK.
6. MAX SIZE: 3'-8" W.I.C. X 7'-6" H.I.C.

7. OPTIONS
- | | | | |
|--|--------------------------|-----|----|
| A. INSIDE TRIM, 6 3/4" WIDE, METAL CLAD TO MATCH FRAME | <input type="checkbox"/> | YES | NO |
| B. LOCKING PROVISIONS, CONSISTING OF CHROME PLATED RIM NIGHT LATCH WITH KEY CYLINDER ON FRONT AND THUMB TURN ON BACK | <input type="checkbox"/> | | |

DOOR NUMBER	DOOR QUANTITY	SWING		DOOR SIZE	
		LEFT HAND	RIGHT HAND	WIDTH IN CLEAR	HEIGHT IN CLEAR



CAUTION

1. DO NOT FORCE.
2. DO NOT STRIKE.
3. DO NOT USE TOOLS TO REMOVE OR DAMAGE.
4. DO NOT REMOVE OR DAMAGE.
5. DO NOT REMOVE OR DAMAGE.
6. DO NOT REMOVE OR DAMAGE.
7. DO NOT REMOVE OR DAMAGE.
8. DO NOT REMOVE OR DAMAGE.
9. DO NOT REMOVE OR DAMAGE.
10. DO NOT REMOVE OR DAMAGE.

CUSTOMER: JAMISON DOOR COMPANY
 TITLE: "JAMICLEAR" COOLER DOOR IN WOOD FRAME
 PROJECT: 1-4-11-18
 DATE: 04-19-17
 DRAWN BY: H.A.J.
 CHECKED BY: H.A.J.
 APPROVED BY: H.A.J.
 ALL DIMENSIONS UNLESS OTHERWISE SPECIFIED ARE IN INCHES AND DECIMALS THEREOF.
 NO DIMENSIONS SHALL BE LESS THAN 1/8\"/>

NO. J9025002N

NOTES:

- DOOR PANEL - "JAMISON" POLYURETHANE INSULATED.
 - A. COOLER DOOR 4" STANDARD "R" VALUE 32
 - B. FREEZER DOOR 4" STANDARD "R" VALUE 32
 - C. FREEZER DOOR 6" OPTIONAL "R" VALUE 48
- SILL LINE
 - A. HIGH SILL
- FRONT/OP - LOCATION FOR FREEZER DOORS
 - A. ROPS SILL - 4 STUDS OF FRAME
- DOOR IS .425 GAUGE STEEL EMBRESSED WHITE FINISH ON FRONT, BACK AND EDGES OVER WOOD FRAMING. INSIDE AND OUTSIDE SURFACES ARE FINISHED CLAD DOOR. EXPOSED SURFACES WITH .030 GAUGE STEEL EMBRESSED WHITE FINISH
- DOOR HINGES
 - 3 - K-7500 BRIDGE MOUNTED CAM-LET HINGES
 - 4 - 1/4" CORROSION PROTECTED FINISH
- DOOR LATCH
 - 1 - K-55 SAFETY RELEASE LATCH WITH CORROSION PROTECTED FINISH (BACK DOOR FULL "TOLLOD.")
- OPTIONS:
 - A. JAMES, 1 1/2" THICK YES NO
 - B. INSIDE TRIM, 1 1/2" x 5 1/2"
 - C. DOOR SEALED TO MEET I.O. SPECIFICATIONS
 - D. KICKPLATE, DOOR FRONT
 - E. KICKPLATE, FLAT BACK OF DOOR
 - F. KICKPLATE, FRAME
 - G. HIGH HEAT INSULATION
 - H. OTHER
- "FRIDSTOP" LABEL
- MODEL: _____ MATTS: _____ APES: _____
- TEMPERATURE CONDITIONS
- FACTORY REFERENCES:
 - FRAME DRAWING CH-4451-3
 - DOOR PANEL DRAWING CH-4451-5
 - K-55 OFFSET DOOR - 5" DOOR H410B-133

CUSTOMER NOTE
These drawings illustrate our understanding of the requirements of your order. We warrant them to you for the purpose of securing complete and correct specifications. We make no warranty, specification or representation, in the event of their being in any way inapplicable to your or our equipment, materials or their effect when combined together.

FRONT ELEVATION
LEFT HAND SWING SHOWN - RIGHT HAND OPPOSITE ONE () DOOR REQUIRED - _____ SWING

VERTICAL SECTION
HIGH SILL

HORIZONTAL SECTION

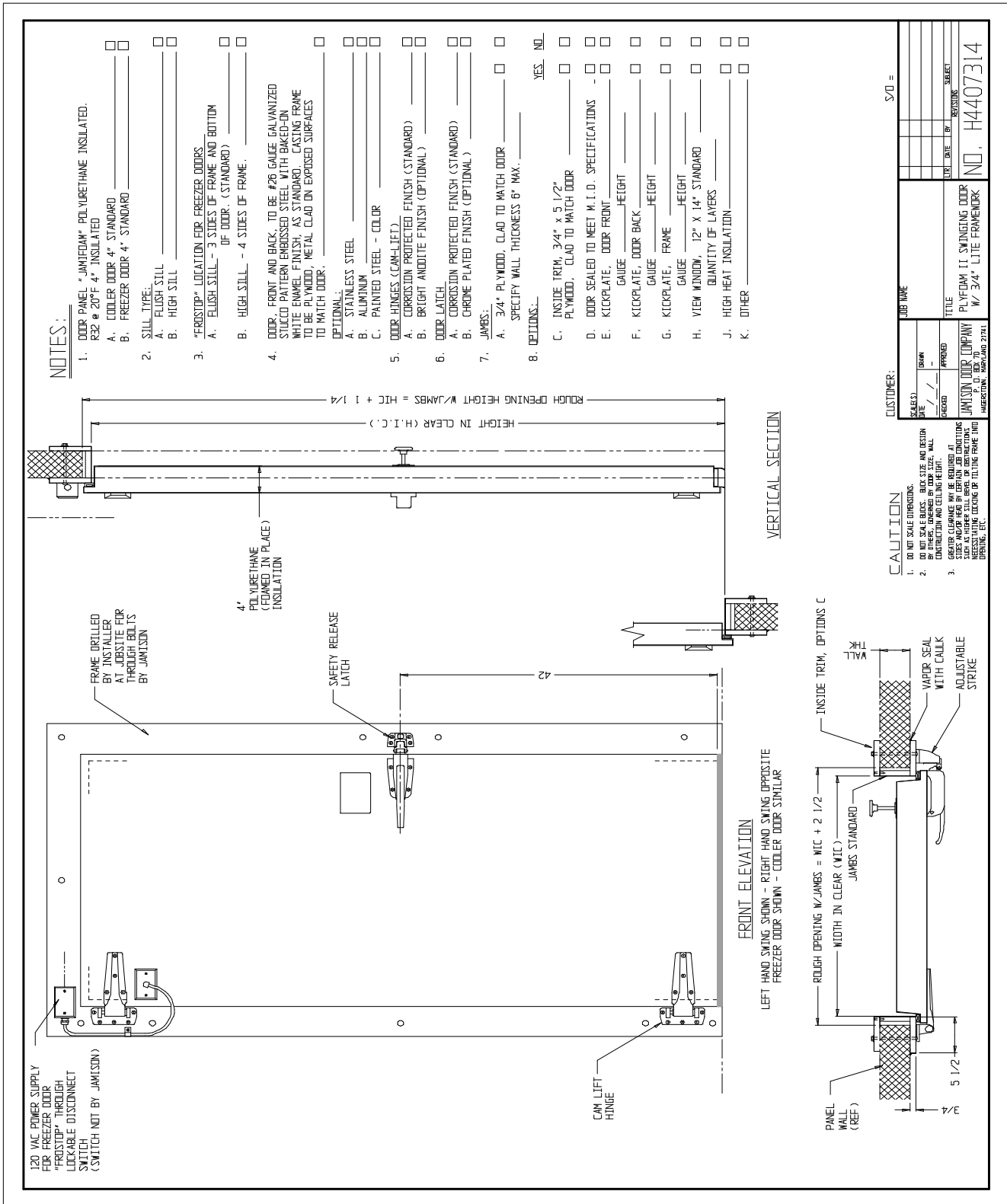
CAUTION

DO NOT EXCEED MAXIMUM WEIGHTS AND LOADS. ALWAYS USE PROPER LIFTING TECHNIQUES AND FOLLOW ALL SAFETY INSTRUCTIONS. ALWAYS USE PROPER LIFTING TECHNIQUES. ALWAYS USE PROPER LIFTING TECHNIQUES.

CUSTOMER:

NAME	ADDRESS	PHONE	DATE
JAMISON DOOR COMPANY	1000 W. 10TH ST. WYOMING, WY 82197		
TITLE	PROJECT	PRICE	DATE
DESIGN SWING FREEZER DOOR			

NO. H44510010



NOTES: